

3000A

T-58-11-23

Monolithic IC

Electronic Tuner Voltage Regulator

©41E

Features

- . Small temperature coefficient of regulated voltage.
- . Small dynamic resistance

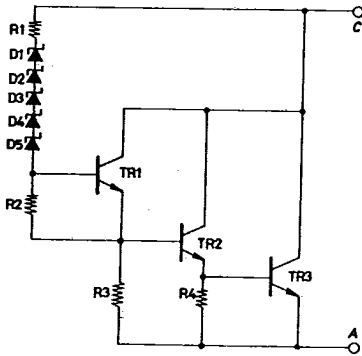
Maximum Ratings / Ta=25°C

Supply Current	I_Z	10	mA	
Allowable Power Dissipation	P_{dmax}	$T_a \leq 75^\circ C$	200	mW
Operating Temperature	T_{opg}	-20 to +75	°C	
Storage Temperature	T_{stg}	-40 to +125	°C	

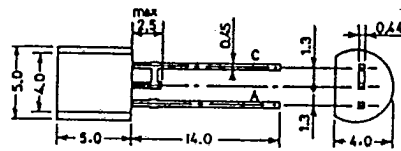
Operating Characteristics / Ta=25°C

			min	typ	max	unit
Regulated Voltage	V_Z	$I_Z=5mA$	31		35	V
Temperature Coefficient of Regulated Voltage	$\Delta V_Z / \Delta T$	$I_Z=5mA, T_a=-20-+75^\circ C$	-1		+1	mV/°C
Dynamic Resistance	r_Z	$I_Z=5mA, f=1kHz, i=0.5mA$			25	ohm

Equivalent Circuit



Case Outline 3000A-S2TR
(unit:mm)



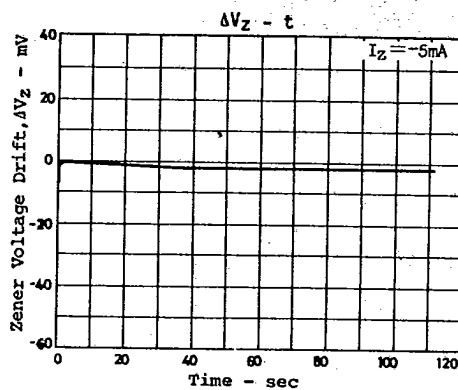
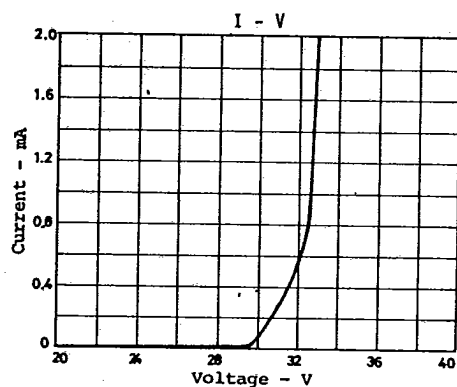
C: Cathode
A: Anode
SANYO: NPC1

8217KI/6115KI/3204KI/7213KI, TS No.441-1/2

615

L5630

T-58-11-23



616